

# ICOLSE 2019 Sponsorship Opportunities



**Wichita, Kansas, USA**  
**September 10-13, 2019**



# International Conference on Lightning and Static Electricity

- ICOLSE is a biennial conference with the aim of bringing together experts from all fields on the subjects of lightning and static electric.
- It is concerned with all aspects of lightning interaction with ground, air and sea systems.
- Papers will be presented that contain original material to promote discussion at all levels and address problems of present and future technologies.
- ICOLSE aims to encourage a real understanding of atmospheric electricity environmental hazards.
- A full program of papers on topics from phenomenology, through measurement, design, protection, testing and computational modelling will be presented.
- Authors come from across Europe, USA and Canada, from Russia, Japan, Singapore, Malaysia and Australia.



# Wichita, KS



ICOLSE returns to North America for the first time in 6 years to the Air Capital of the World, Wichita, Kansas, where over 25% of the world's aircraft have been made and many aviation pioneers got their start.

Wichita is the largest city in Kansas. Located on the Arkansas River, the city began as a trading post on the Chisholm Trail in the 1860s and was incorporated in 1870. It subsequently became the destination for cattle drives North from Texas to railroads, earning it the nickname "Cowtown". In the 1920s and 1930s, businessmen and aeronautical engineers established aircraft manufacturing companies in Wichita. Home to multiple aircraft manufactures such as Textron Aviation, Bombardier, Spirit AeroSystems, and Boeing. The city was transformed into a hub of U.S. aircraft production and became known as "The Air Capital of the World". Today there are many interesting sites in the Wichita area including botanical gardens, the Cosmosphere, the Kansas Aviation Museum, the Sedgwick County Zoo, Old Town, and the Keeper of the Plains.



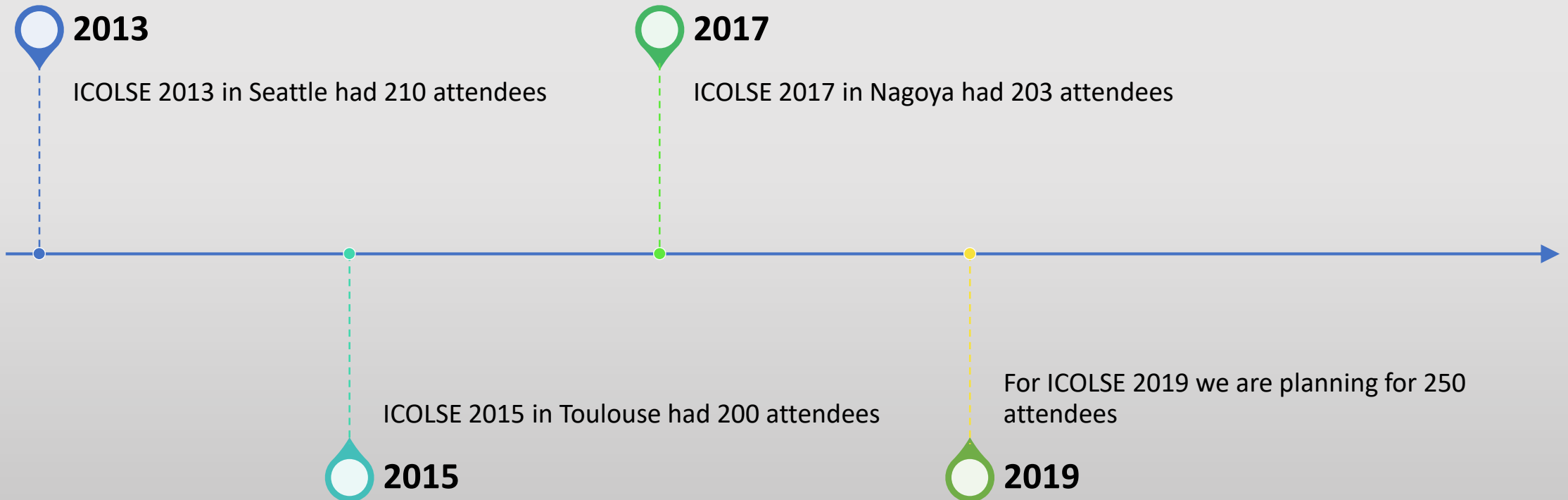
# Host Venue



- Lecture Hall (capacity 250+)
- Commons Area (capacity 180)
- Conference Room S210 (capacity 40)
  - 3 additional conference rooms (capacity 25)
- 21 classrooms (capacity 25-40)



# Attendance





# Sponsorship List

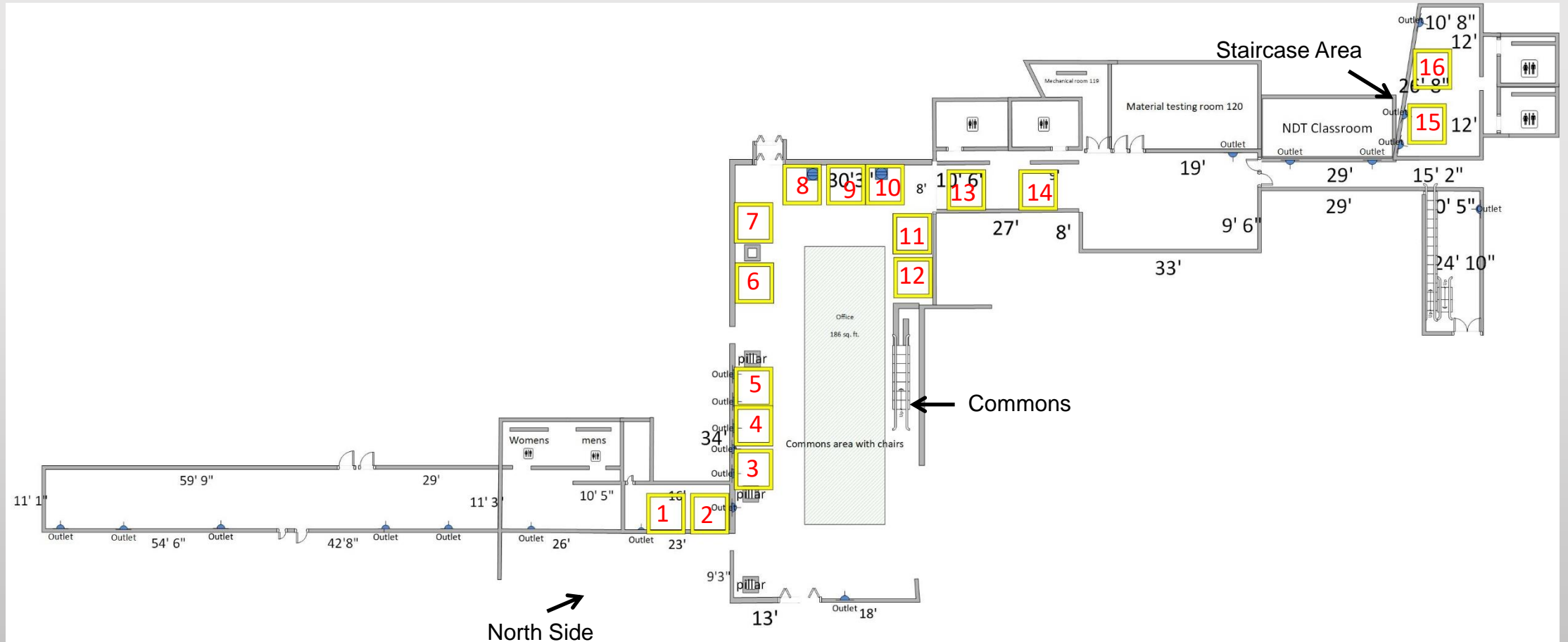
Sponsorship Opportunity	Cost
Welcome Ad on Symposium Website	\$2,000
Product Demo in Symposium Track	\$3,500
Sponsor Coffee Break	\$350
Sponsor Attendee Bags	Actual Cost
Other Giveaway in Attendee Bags	\$500
Logo on all Signage at Conference Venue	\$1,000
Logo on Symposium Email Contacts	\$2,000
Satellite Table Outside Presentation Hall	\$2,000
Logo on Final Program Printed Materials	\$2,000
Silver Exhibit Booth	\$1,500
Gold Exhibit Booth	\$2,500
USB Drives	\$1,500



## Booth Spaces Overview

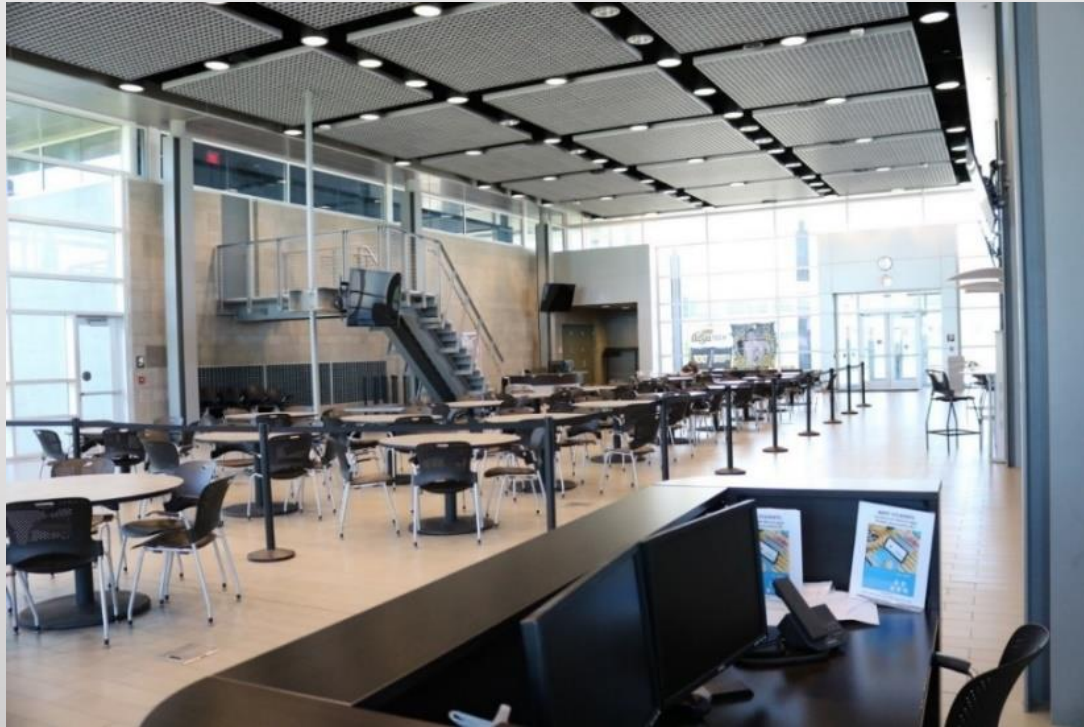
- All booth spaces are approximately 7' x 5' increments
- There are 16 spaces available
- The yellow squares indicate the location of the space.
- The blue semicircle in the picture are power outlets.
- Ten Gold Spaces within the commons will provide the most foot-traffic
- Six Silver Spaces within the surrounding areas will provide a less expensive option

# Booth Locations





# Booth Locations Pictures



Commons



Staircase Area



# Sponsor Contacts

Tim McDonald

[tim@ema3d.com](mailto:tim@ema3d.com)

720-974-1217

Emily Hennerberg

[ehennerberg@niar.wichita.edu](mailto:ehennerberg@niar.wichita.edu)

316-978-8284

Mariah Smith

[msmith@niar.wichita.edu](mailto:msmith@niar.wichita.edu)

316-978-8284